

ST. VITAL FESTIVAL

New Retail Pad Site in an Exceptional Trade Area

1919-1949 Bishop Grandin Boulevard, Winnipeg, Manitoba

ANCHOR TENANTS DEEMED “**ESSENTIAL SERVICES**”
OPEN WITH STRONG TRAFFIC DURING COVID INTERRUPTION



BUSY
RETAIL NODE



DOMINANT
SIGNAGE



GREAT
ACCESS



950+
PARKING STALLS



STRONG
TRADE AREA

ST. VITAL FESTIVAL

1919-1949 Bishop Grandin Boulevard, Winnipeg, Manitoba

SURROUNDED BY RAPIDLY EXPANDING RESIDENTIAL COMMUNITIES

- Situated in a **safe neighbourhood**, in southeast Winnipeg on the north side of Bishop Grandin Boulevard, just west of St. Anne's Road
- St. Vital Festival serves the communities of St. Vital, St. Boniface, Southdale/Windsor Park
- Opportunity to serve the new Sage Creek development with plans for over 600 single and multi-family luxury homes and the new housing developments nearby in South St. Vital including Bonavista which expects up to 2,000 multi-family homes.



ACCESS & TRAFFIC LINKS

Features superior access via a **controlled intersection** on St. Anne's Road and **right in/out** on Bishop Grandin.

Only a 15 minute drive to Downtown. The property enjoys **superior access and linkage** to all areas of the City with direct linkages to major arteries including St. Anne's Road, Bishop Grandin Boulevard and Lagimodiere Boulevard.

Adjacent to the **Bishop Grandin Greenway**, a beautifully landscaped, paved walking and bike path that connects Lagimodiere Boulevard to Pembina Highway.

There are **76,700 vehicles per day** at Bishop Grandin Boulevard and St. Anne's Road.

Reference: City of Winnipeg Public Works Department 2018

204.474.2000

Shindico

ST. VITAL FESTIVAL

1919-1949 Bishop Grandin Boulevard, Winnipeg, Manitoba

AN EXCEPTIONAL TRADE AREA

- **New 3,000 +/- square foot pad available for development at busy shopping centre anchored by Home Depot and Sobeys. Other tenants on the site include Michaels, Boston Pizza and Part Source.**
- Strong retail node with **over 100 retailers and services** are located within a 1 kilometre radius of the site including St. Vital Shopping Centre, the regional centre for South Winnipeg, anchored by Walmart Supercentre, Hudson's Bay, Marshalls, Homesense, Co-op Food Store, Chapters and Silver City Theaters.
- Great exposure to Bishop Grandin Boulevard allowing for **dominant signage** opportunities.



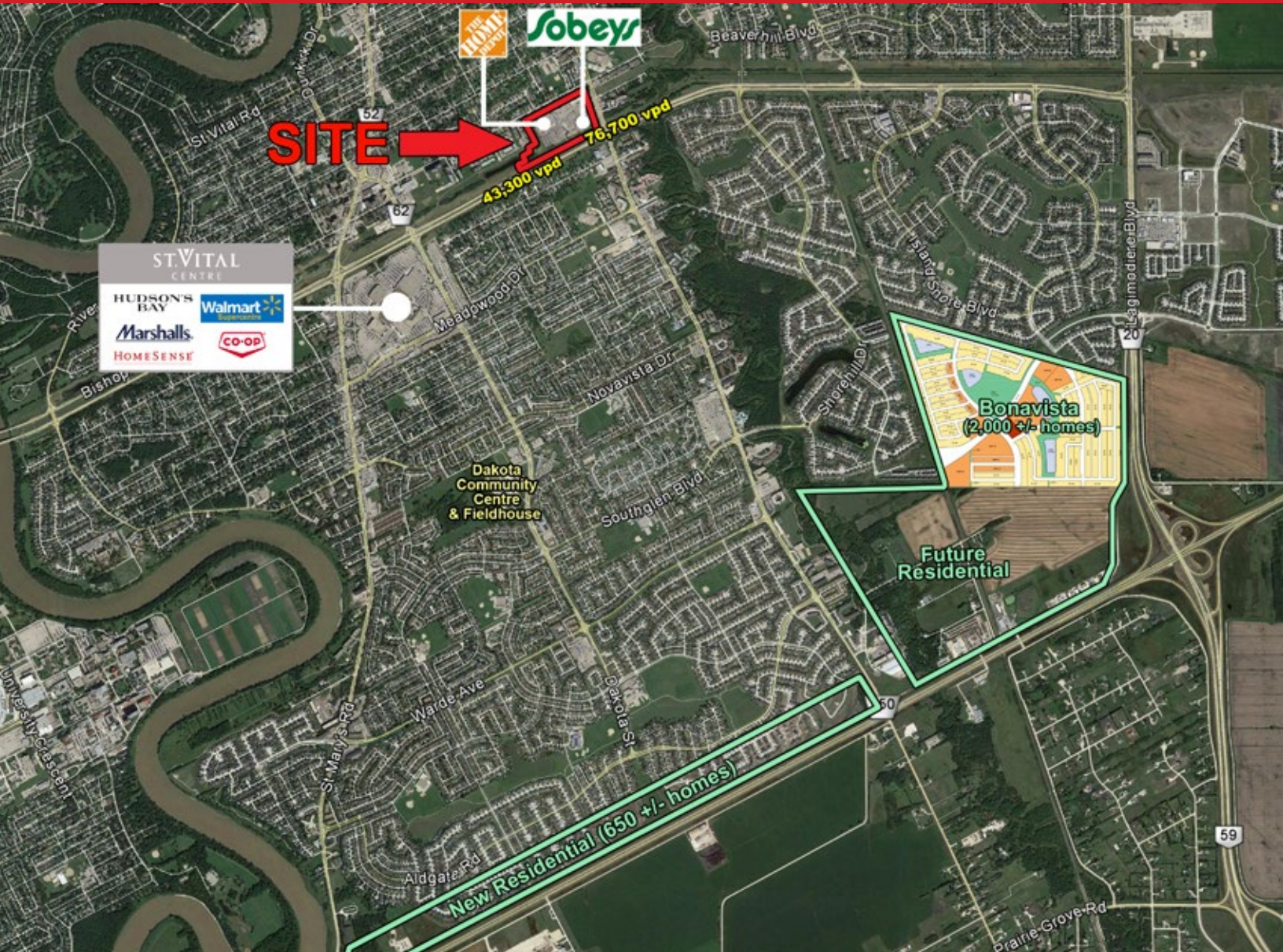
10 MINUTE DRIVE TIME DEMOGRAPHICS

Total Population	162,579
Daytime Population	127,350
Households	62,672
Median Age	38.3
Avg. Household Income	\$106,885

EnviroNics Analytics ©2020

ST. VITAL FESTIVAL

1919-1949 Bishop Grandin Boulevard, Winnipeg, Manitoba



FOR MORE INFORMATION, PLEASE CONTACT:

Sandy Shindleman, CCIM, SIOR, CRE, FRICS
P (204) 474-2000
sgshindleman@shindico.com

Robert Shindleman
P (204) 474-2000
rshindleman@shindico.com

Shindico Realty Inc.
200-1355 Taylor Avenue
Winnipeg, Manitoba R3M 3Y9
P (204) 474-2000
inquire@shindico.com
www.shindico.com



Shindico

Succeeding by Helping Others Succeed



Shindico is dedicated to the protection of the environment and the communities that we are a part of.

The accuracy of the information set out herein has not been confirmed, and Shindico Realty Inc. and its affiliates make no representations or warranties as to the accuracy of the information and assumes no responsibility for errors or omissions. The recipient is responsible to verify the accuracy of any information and bears all risk related to any inaccuracies. 090921