

# FOR LEASE

Coming to Market - 6,000 SF - 200,000 SF Multi-Tenant Industrial  
Goldenrod Drive, RM of Rosser, Manitoba, BrookPort Business Park

## INDUSTRIAL STRENGTH



*Concept Rendering*



**MINUTES FROM  
INTERNATIONAL  
AIRPORT**



**CLOSE TO  
TRANSPORTATION  
ROUTES**

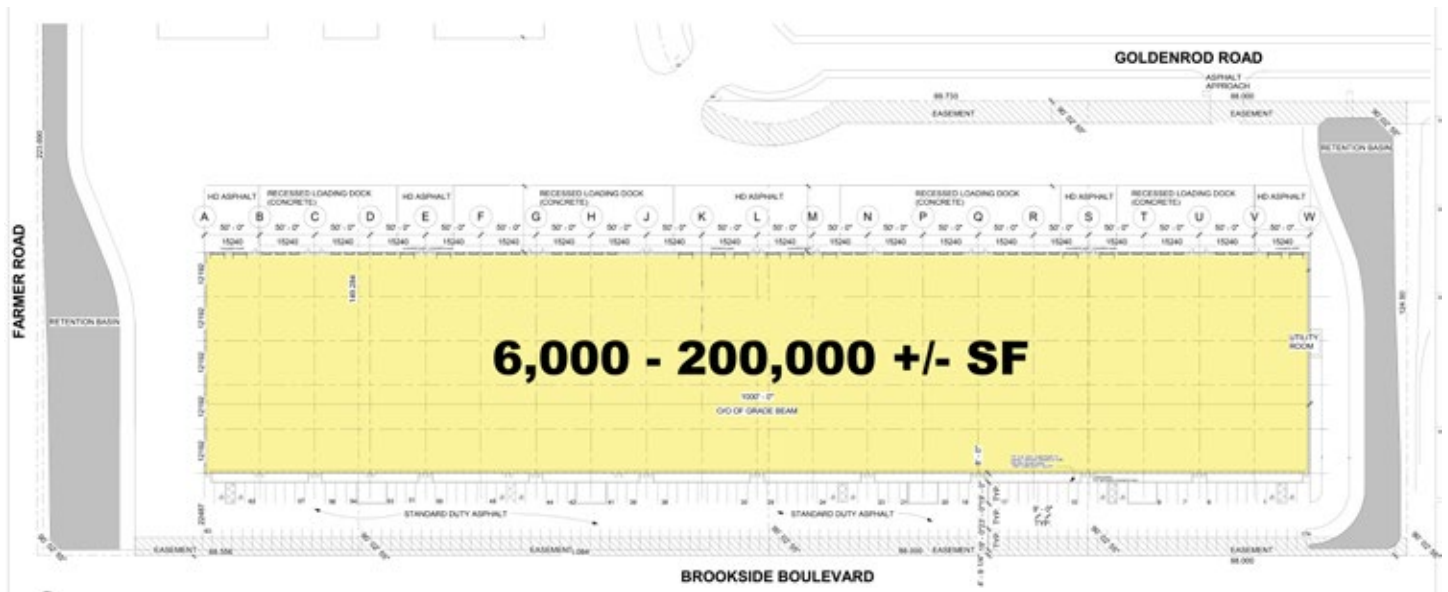


**PYLON &  
BUILDING  
SIGNAGE**

# FOR LEASE

Goldenrod Drive, RM of Rosser, Manitoba, BrookPort Business Park

## BUILDING PLAN



## SITE PLAN



INDUSTRIAL STRENGTH

**Shindico**

# FOR LEASE

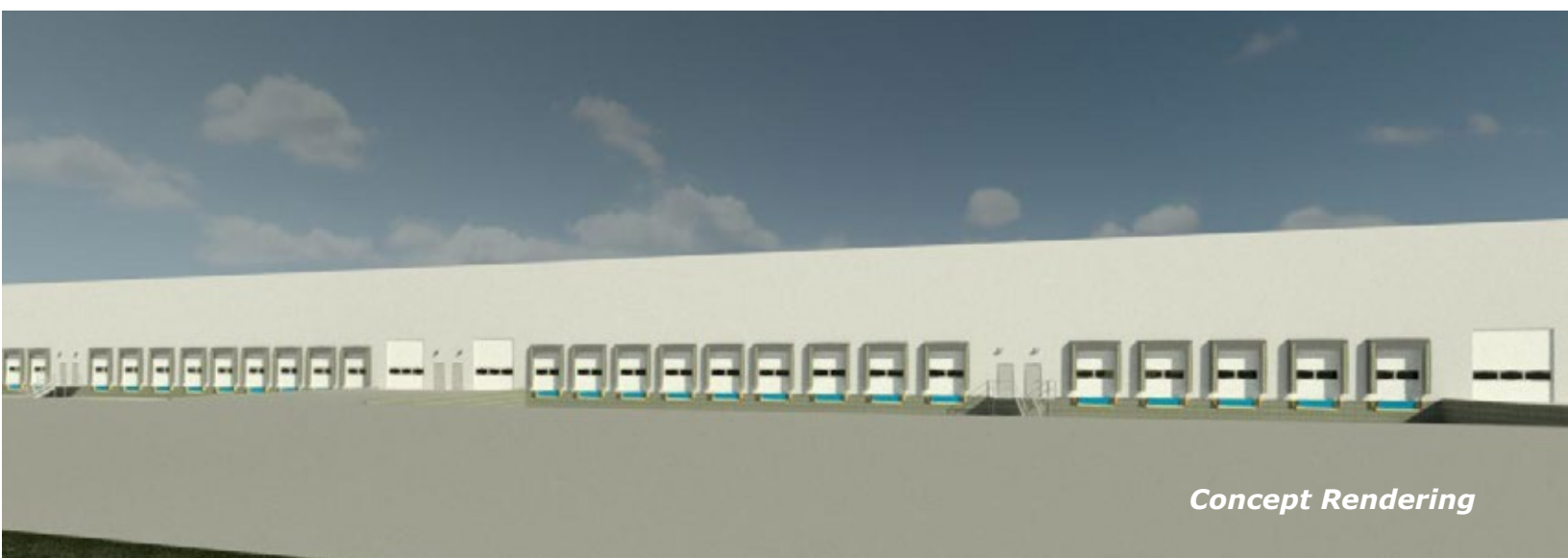
Goldenrod Drive, RM of Rosser, Manitoba, BrookPort Business Park

## PROPERTY SUMMARY

Available	6,000 - 200,000 +/- SF
Lease Rate	TBD
CAM (est. 2020)	\$3.50/SF
Building Size	200,000 +/- SF
Land Size	16.00 +/- Acres
Ceiling Height	28' Clear
Loading	Dock Grade
Utilities:	
- Separately Metered Electricity & Natural Gas	
- Municipal Service for Water & Sanitation	
Parking	Ample Staff & Tenant Parking
Zoning	I2 - Industrial

## PROPERTY HIGHLIGHTS

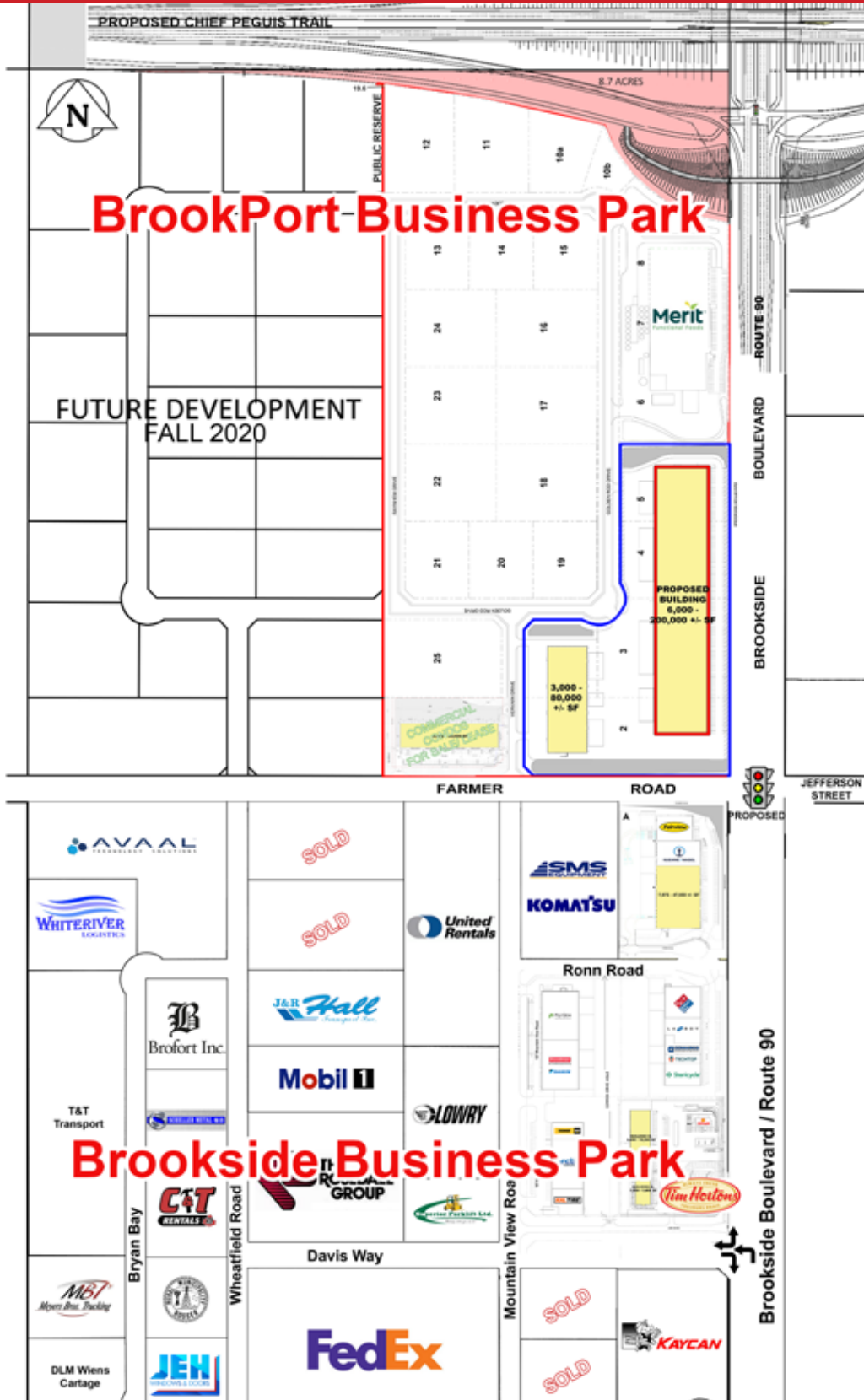
- Strategically located in the R.M. of Rosser within CentrePort Canada - the country's only inland port which offers companies unparalleled access to tri-modal transportation and Foreign Trade Zone benefits.
- Great exposure to Brookside Boulevard.
- No City of Winnipeg business taxes.
- Excellent access to Brookside Boulevard (Route 90) & CentrePort Canada Way, in close proximity to the Winnipeg James Armstrong Richardson International Airport.
- Brand new state-of-the-art multi-tenant industrial building with build to suit options available.
- Fully sprinklered.
- Professionally managed.
- Fully serviced (asphalt roads, water, sewer, hydro, gas, high speed internet/phone).
- Heavy duty gravel in truck maneuvering areas.
- Commercial duty asphalt paving in automobile parking areas.
- Tenant fit-ups slated for Fall 2020.



*Concept Rendering*

# FOR LEASE

Goldenrod Drive, RM of Rosser, Manitoba, BrookPort Business Park



INDUSTRIAL STRENGTH

**Shindico**

# FOR LEASE

Goldenrod Drive, RM of Rosser, Manitoba, BrookPort Business Park

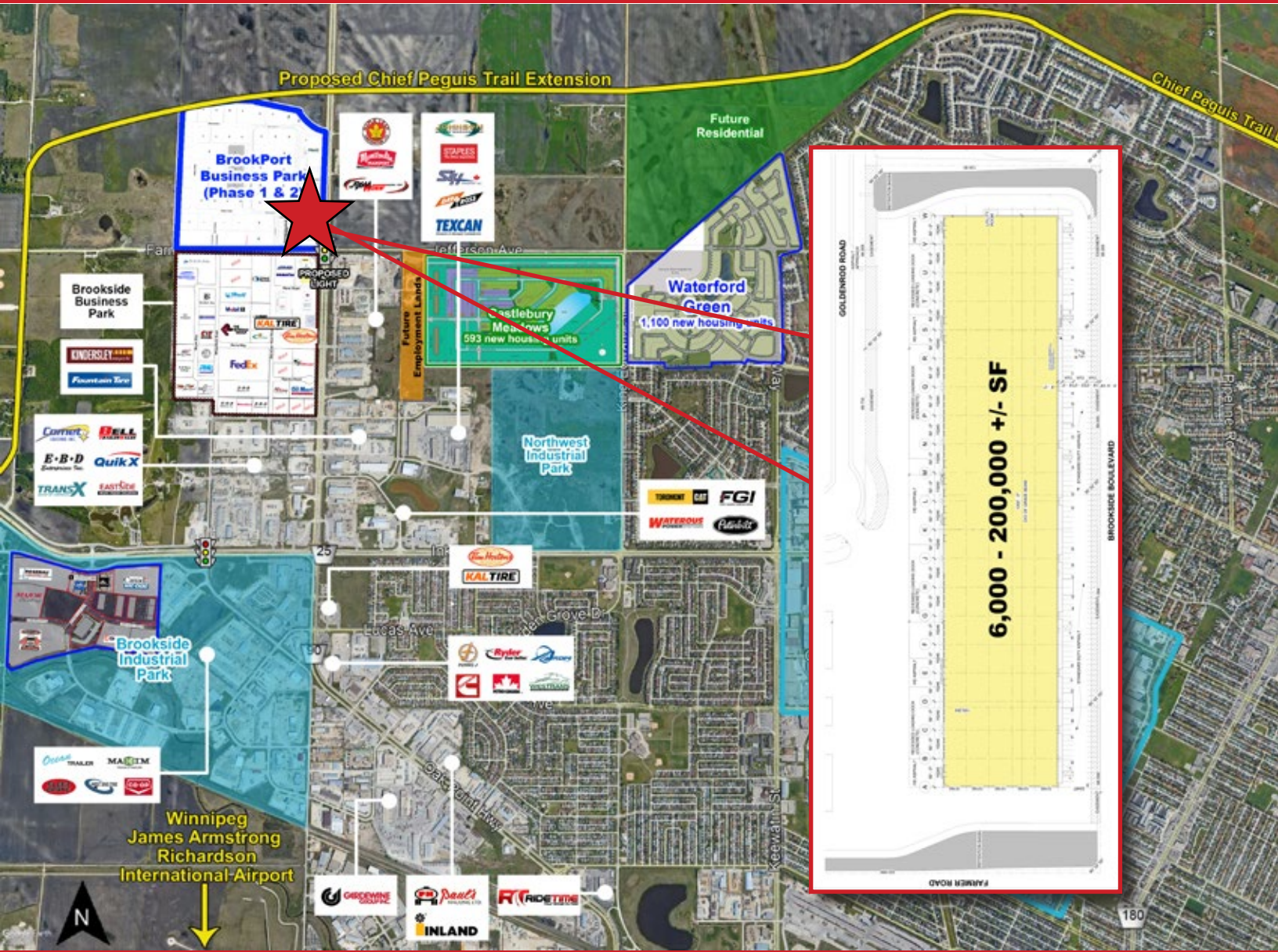
## DRIVE TIMES FROM GOLDENROD DRIVE



Route from Subject Lands	Distance (km.)	Drive Time
<b>1</b> North Perimeter Highway (Hwy 100) & Rte 90	3.7	3 min
<b>2</b> East Perimeter Highway (Hwy 100) & Trans-Canada Highway East (Hwy 1)	37.1	26 min
<b>3</b> South Perimeter Highway (Hwy 100) & Hwy 75	39.3	29 min
<b>4</b> West Perimeter Highway (Hwy 100) & Trans-Canada Highway West (Hwy 1)	16.1	15 min
<b>5</b> Winnipeg Richardson International Airport	10	9 min
<b>6</b> Downtown (Portage Ave & Main St)	12	23 min
<b>7</b> Lagimodiere Boulevard (Hwy 59) & Regent Avenue West	25.5	21 min
U.S. Border Crossing via Hwy 75	117	1 hr 24 min
U.S. Border Crossing via Hwy 59	140	1 hr 31 min
Brandon, Manitoba	215	2 hr 14 min

# FOR LEASE

Goldenrod Drive, RM of Rosser, Manitoba, BrookPort Business Park



FOR MORE INFORMATION, PLEASE CONTACT:

**Robert Scaletta**

P (204) 928-8242

C (204) 223-9777

[rscaletta@shindico.com](mailto:rscaletta@shindico.com)

**Mark Scaletta**

P (204) 928-8223

C (204) 510-3754

[mscaletta@shindico.com](mailto:mscaletta@shindico.com)

**WHITELAND**

MAKING REAL ESTATE REAL

**Shindico Realty Inc.**

200-1355 Taylor Avenue

Winnipeg, Manitoba R3M 3Y9

P (204) 474-2000

[inquire@shindico.com](mailto:inquire@shindico.com)

[www.shindico.com](http://www.shindico.com)

**RETAIL** BROKERS NETWORK

**Shindico**

*Succeeding by Helping Others Succeed*

**CORFAC** International



*Shindico is dedicated to the protection of the environment and the communities that we are a part of.*

The accuracy of the information set out herein has not been confirmed, and Shindico Realty Inc. and its affiliates make no representations or warranties as to the accuracy of the information and assumes no responsibility for errors or omissions. The recipient is responsible to verify the accuracy of any information and bears all risk related to any inaccuracies.062520