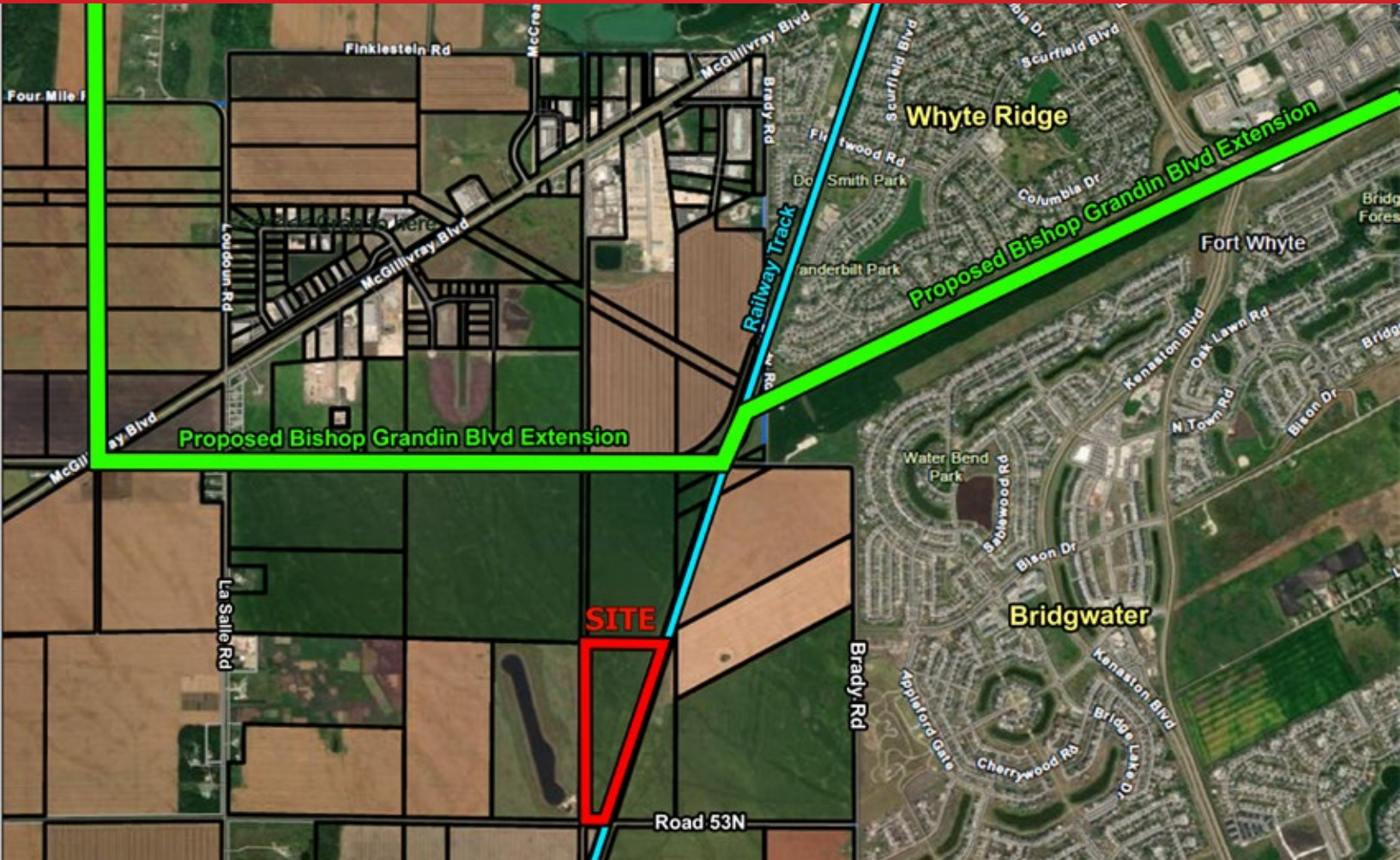


FOR SALE

Investment Land for Sale

Brady Road, R.M. of MacDonald, Manitoba



PROPERTY SUMMARY

Land Size	43 Acres
Price	\$995,000
Zoning	A - Agricultural
Roll Number	86200

FEATURES

Located west of Brady Road and south of McGillivray Blvd.

DEMOGRAPHICS

	5 km. Radius	10 km. Radius
Total Population	39,682	192,936
Daytime Population	27,121	166,209
Households	12,476	71,714
Median Age	34.3	38.8
Avg. Household Income	\$144,004	\$132,662

Source: Environics Analytics ©2021

FOR SALE

Brady Road, R.M. of MacDonald, Manitoba



FOR MORE INFORMATION, PLEASE CONTACT:

Exclusively Marketed By: Ian Corbett

P (204) 928-8231

C (204) 688-7653

icorbett@shindico.com

Shindico Realty Inc.

200-1355 Taylor Avenue

Winnipeg, Manitoba R3M 3Y9

P (204) 474-2000

inquire@shindico.com

www.shindico.com



Shindico

Succeeding by Helping Others Succeed



Shindico is dedicated to the protection of the environment and the communities that we are a part of.

The accuracy of the information set out herein has not been confirmed, and Shindico Realty Inc. and its affiliates make no representations or warranties as to the accuracy of the information and assumes no responsibility for errors or omissions. The recipient is responsible to verify the accuracy of any information and bears all risk related to any inaccuracies.030322