

# TYNDALL MARKET MALL

Grocery Anchored Neighbourhood Centre in Northwest Winnipeg

850 Keewatin Street, Winnipeg, Manitoba



**BUSY**  
RETAIL NODE



**DOMINANT**  
SIGNAGE



**GREAT**  
ACCESS



**AMPLE**  
PARKING



**131,200+**  
POPULATION

# TYNDALL MARKET MALL

850 Keewatin Street, Winnipeg, Manitoba



## FEATURES

- Join Safeway, Manitoba Liquor Mart, Dollar Tree and TD Canada Trust in high traffic, grocery anchored neighbourhood centre.
- Ample parking for customers and staff with mall access from east and west sides of the property.
- Exceptional exposure and access at the key signalized intersection of Keewatin Street and Burrows Avenue, including a left-turn stacking lane off Keewatin.
- Located in Tyndall Park, a densely populated residential area with immediate access to the substantial daytime population in the immediately adjacent Inkster Industrial Park.
- Surrounded by growing residential areas including Waterford Green and Castlebury Meadows.

204.474.2000

**Shindico**



# TYNDALL MARKET MALL

850 Keewatin Street, Winnipeg, Manitoba

## PROPERTY SUMMARY

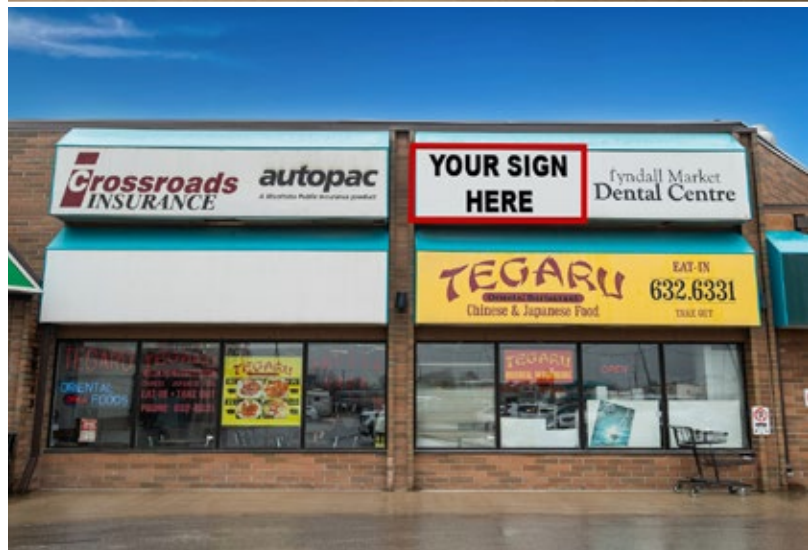
Available (Feb 1, 2026)	1,039 SF
Net Rent	TBD
Property Taxes (2025 est.)	\$ 4.63/SF
CAM* (2025 est.)	\$ 9.50/SF
Zoning	C3
Parking	302 stalls

\*plus management fee

## DEMOGRAPHICS

	5 min. Drive Time	10 min. Drive Time
Total Population	30,577	131,233
Daytime Population	35,298	147,174
Households	9,503	42,968
Median Age	36.2	35.6
Avg. Household Income	\$108,859	\$99,512

EnviroNics Analytics ©2024





# TYNDALL MARKET MALL

850 Keewatin Street, Winnipeg, Manitoba



FOR MORE INFORMATION, PLEASE CONTACT:

**Kathryn Comeault**  
P (204) 928-8227  
C (204) 688-1089  
[kcomeault@shindico.com](mailto:kcomeault@shindico.com)

**Shindico Realty Inc.**  
200-1355 Taylor Avenue  
Winnipeg, Manitoba R3M 3Y9  
P (204) 474-2000  
[inquire@shindico.com](mailto:inquire@shindico.com)  
[www.shindico.com](http://www.shindico.com)



**Shindico**  
*Succeeding by Helping Others Succeed*



*Shindico is dedicated to the protection of the environment and the communities that we are a part of.*

The accuracy of the information set out herein has not been confirmed, and Shindico Realty Inc. and its affiliates make no representations or warranties as to the accuracy of the information and assumes no responsibility for errors or omissions. The recipient is responsible to verify the accuracy of any information and bears all risk related to any inaccuracies. 040925