

FOR SALE

Fort Whyte Business Park

R.M. of MacDonald, Manitoba



**SIGNAGE
OPPORTUNITY**



**GREAT
ACCESS**



**EXCELLENT
FRONTAGE**

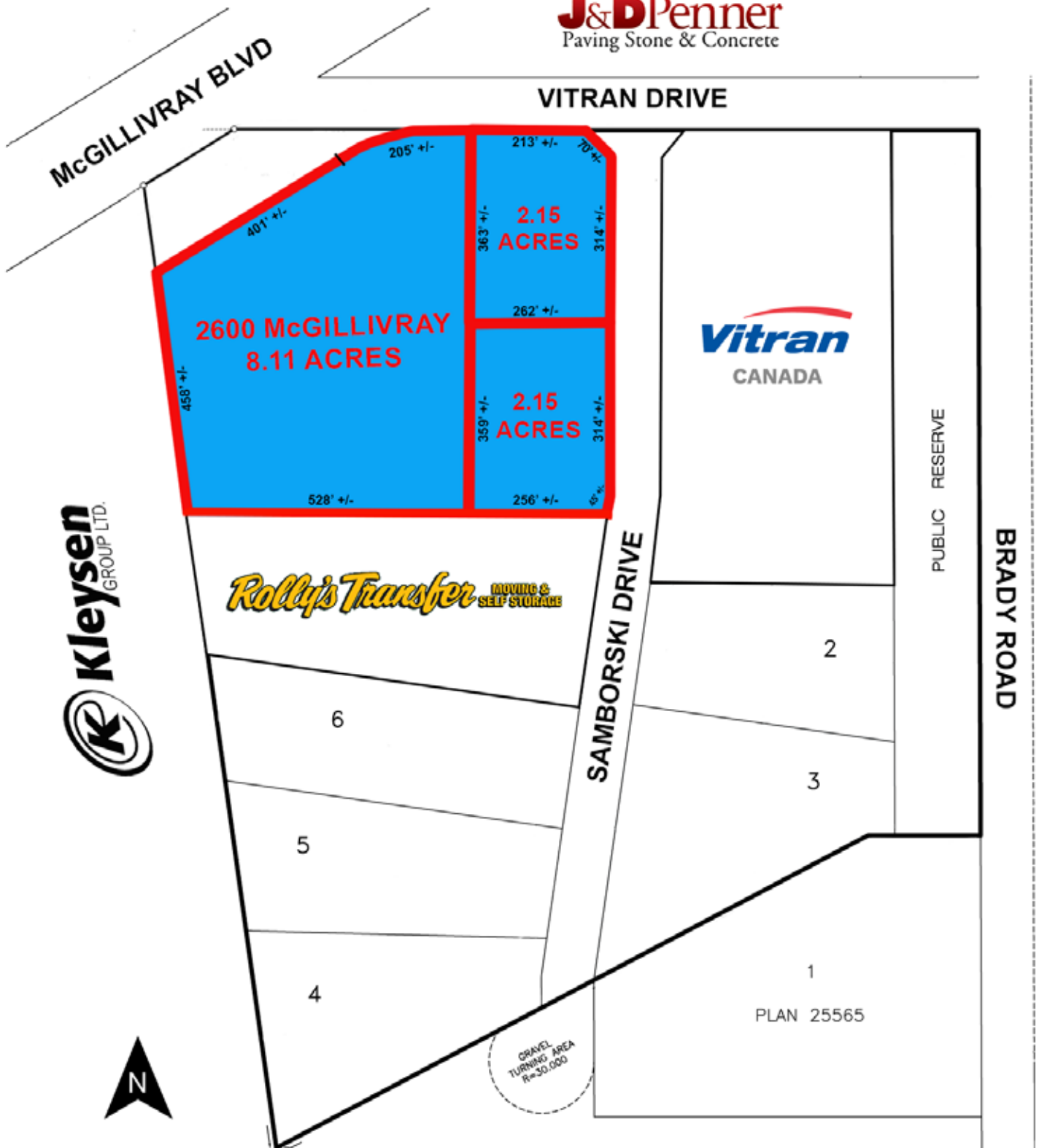
FOR SALE - INDUSTRIAL LOTS

Fort Whyte Business Park, R.M. of MacDonald, Manitoba

J&D Penner
Paving Stone & Concrete

VITRAN DRIVE

McGILLIVRAY BLVD



Exclusively Marketed By: Ian Corbett
P (204) 928-8231 | C (204) 688-7653
icorbett@shindico.com

Shindico

FOR SALE - INDUSTRIAL LOTS

Fort Whyte Business Park, R.M. of MacDonald, Manitoba

AVAILABLE LOTS

<u>Address</u>	<u>Acres*</u>	<u>Price</u>
2600 McGillivray Blvd	8.11	\$4,840,000
184 Samborski Drive	2.15	\$1,280,000
188 Samborski Drive	2.15	\$1,280,000

Zoning ML - Industrial

SERVICES

- Hydro, Gas & MTS available.

FEATURES

- No business tax
- Low property tax
- Southwest corner of McGillivray Boulevard and Brady Road
- Less than 2 kilometres west of Kenaston Boulevard
- Located in Fort Whyte Business Park, south of Fort Whyte Alive and in close proximity to many retail amenities located at Kenaston Boulevard and McGillivray Boulevard
- Located on a major truck route with access to the Perimeter Highway and Trans Canada Highway
- Convenient access to Southwest Winnipeg and surrounding rural area

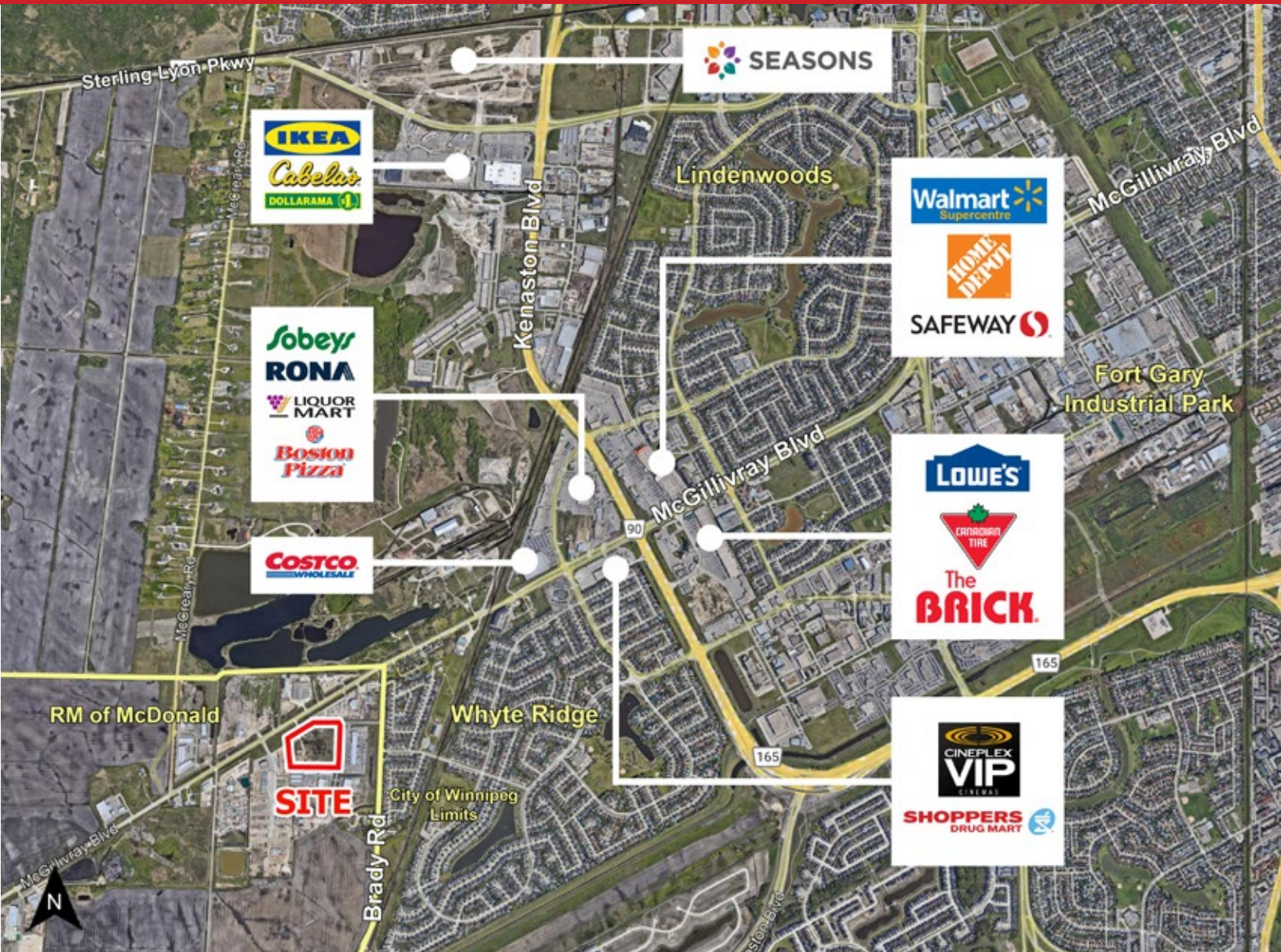


Exclusively Marketed By: Ian Corbett
P (204) 928-8231 | C (204) 688-7653
icorbett@shindico.com

Shindico

FOR SALE - INDUSTRIAL LOTS

Fort Whyte Business Park, R.M. of MacDonald, Manitoba



FOR MORE INFORMATION, PLEASE CONTACT:

Exclusively Marketed By: Ian Corbett

P (204) 928-8231

C (204) 688-7653

icorbett@shindico.com

Shindico Realty Inc.

200-1355 Taylor Avenue

Winnipeg, Manitoba R3M 3Y9

P (204) 474-2000

inquire@shindico.com

www.shindico.com



Shindico

Succeeding by Helping Others Succeed



Shindico is dedicated to the protection of the environment and the communities that we are a part of.

The accuracy of the information set out herein has not been confirmed, and Shindico Realty Inc. and its affiliates make no representations or warranties as to the accuracy of the information and assumes no responsibility for errors or omissions. The recipient is responsible to verify the accuracy of any information and bears all risk related to any inaccuracies. 040122