

FOR SALE

2.7 Acres Well-Treed River Property

6915 Roblin Boulevard, Headingley, Manitoba

PROPERTY SUMMARY

Available	Immediately
Land Area	2.7 acres (1,000' x 115' +/-)
Sale Price	TBN
Zoning	A-5 Restricted Agriculture

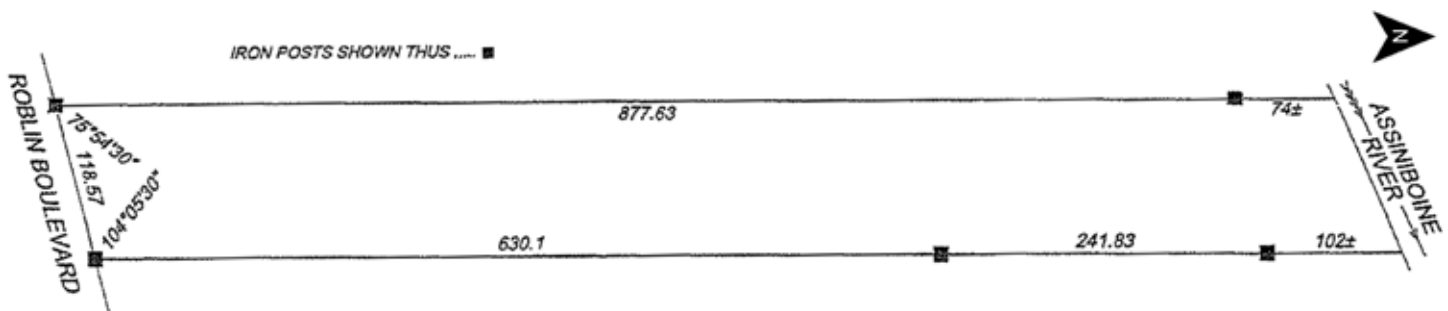
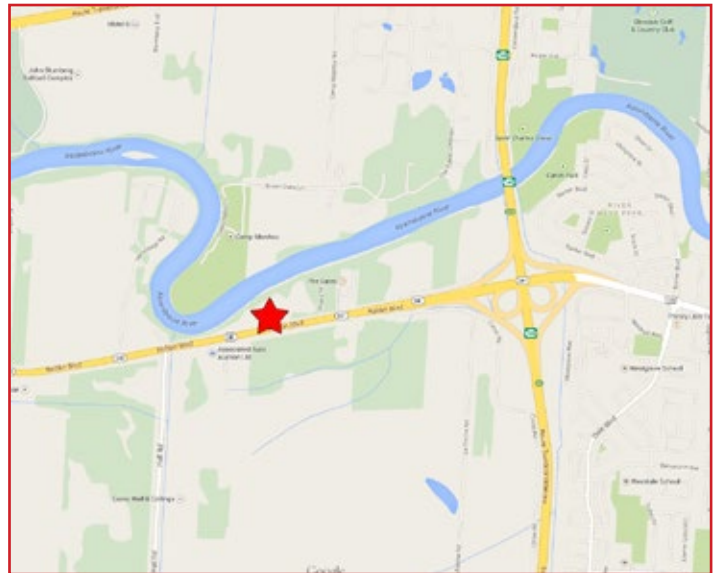
DEMOGRAPHICS

	5 km. Radius	10 km. Radius
Total Population	113,684	385,959
Households	47,196	156,579
Median Age	43.0	38.2
Avg. Household Income	\$124,257	\$104,042

Environics Analytics ©2021

LOCATION

- Situated on the banks of the Assiniboine River, minutes away from Winnipeg on the west edge of the city.
- Beautiful mature trees and fabulous river views.
- Secluded area to build your dream home.
- Country living with city amenities.



FOR SALE

6915 Roblin Boulevard, Headingley, Manitoba



FOR MORE INFORMATION, PLEASE CONTACT:

Michael Stronger

*SHINDICO REALTY, MICHAEL STRONGER and SHINDICO REALTY are affiliated Brokers

P (204) 928-8237

C (204) 793-3448

mstronger@shindico.com

Kathryn Comeault

P (204) 928-8227

C (204) 688-1089

kcomeault@shindico.com

Shindico Realty Inc.

200-1355 Taylor Avenue

Winnipeg, Manitoba R3M 3Y9

P (204) 474-2000

inquire@shindico.com

www.shindico.com



Shindico

Succeeding by Helping Others Succeed



Shindico is dedicated to the protection of the environment and the communities that we are a part of.

The accuracy of the information set out herein has not been confirmed, and Shindico Realty Inc. and its affiliates make no representations or warranties as to the accuracy of the information and assumes no responsibility for errors or omissions. The recipient is responsible to verify the accuracy of any information and bears all risk related to any inaccuracies.102022