

# FOR LEASE

Improved/Fenced Compound Area

555 Kapelus Drive, West St. Paul, Manitoba

## INDUSTRIAL OUTDOOR STORAGE OPPORTUNITY



### PROPERTY SUMMARY

Available	+/- 8.5 to 9 Acres
Possession	Immediate
Lease rate Gross	\$3,000/Acre/Month
Zoning	M1

### FEATURES

- Improved/fenced yard space
- Tenant is responsible for all maintenance of the yard area

### LOCATION

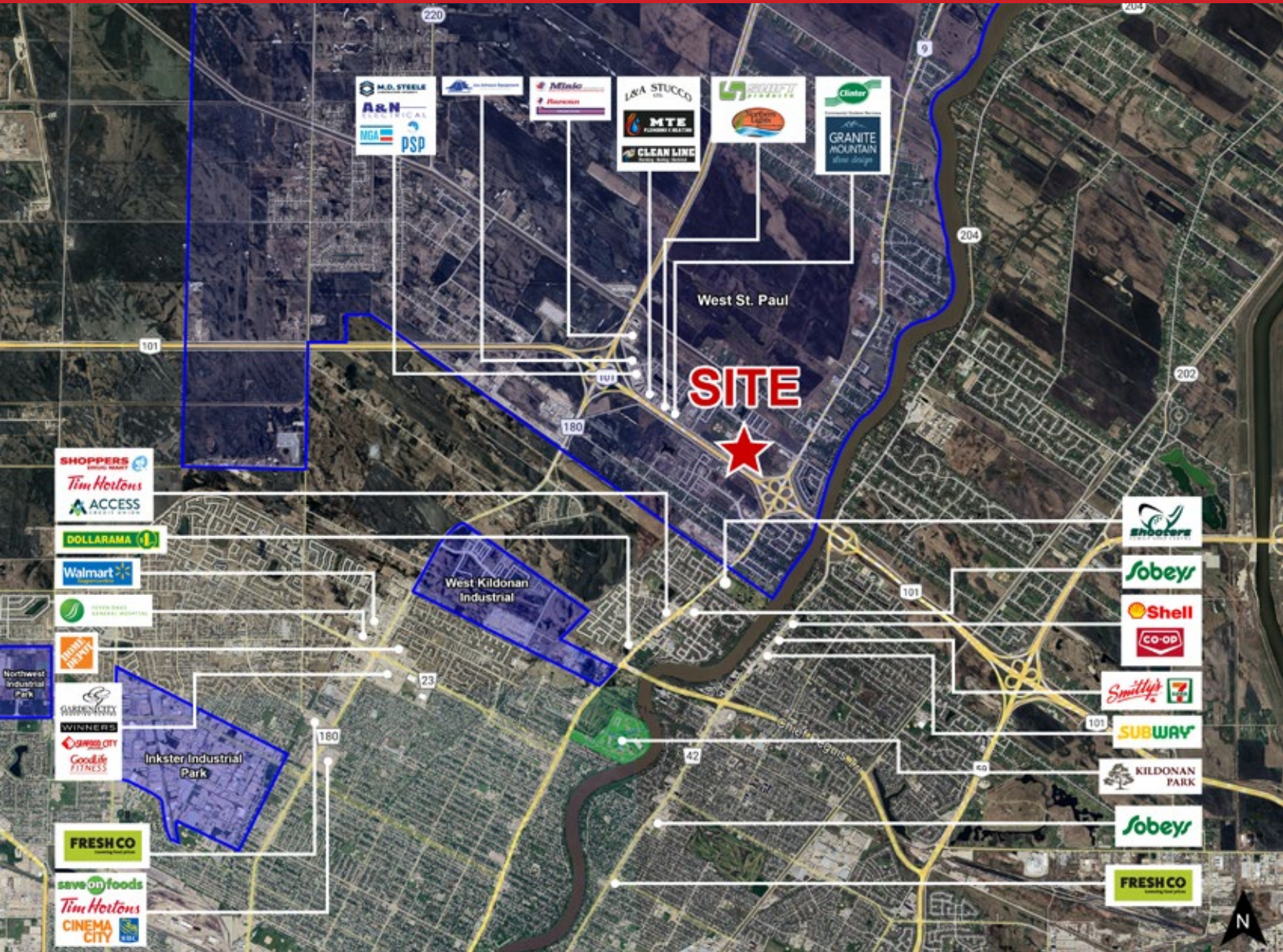
- Very rare compound area opportunity located in R.M. of West St. Paul
- Located just off the north Perimeter Highway, minutes away from Main Street
- Access point via Kapelus Drive

### COMPOUND AREA

- Fenced and gated
- Heavy compacted base
- Well lit throughout

# FOR LEASE

555 Kapelus Drive, West St. Paul, Manitoba



FOR MORE INFORMATION, PLEASE CONTACT:

**Mark Scaletta**

Vice President, Industrial  
P (204) 928-8223  
C (204) 510-3754  
[mscaletta@shindico.com](mailto:mscaletta@shindico.com)

**Robert Scaletta**

Senior Vice President, Industrial  
P (204) 928-8242  
C (204) 223-9777  
[rscaletta@shindico.com](mailto:rscaletta@shindico.com)

**Murray Goodman**

Senior Vice President, Industrial & Investment  
P (204) 928-8228  
C (204) 990-4800  
[mgoodman@shindico.com](mailto:mgoodman@shindico.com)

**Shindico Realty Inc.**

200-1355 Taylor Avenue  
Winnipeg, Manitoba R3M 3Y9  
P (204) 474-2000  
[inquire@shindico.com](mailto:inquire@shindico.com)  
[www.shindico.com](http://www.shindico.com)



*Succeeding by Helping Others Succeed*



*Shindico is dedicated to the protection of the environment and the communities that we are a part of.*

The accuracy of the information set out herein has not been confirmed, and Shindico Realty Inc. and its affiliates make no representations or warranties as to the accuracy of the information and assumes no responsibility for errors or omissions. The recipient is responsible to verify the accuracy of any information and bears all risk related to any inaccuracies.022625