

FOR LEASE

Industrial Opportunity in the heart of Inkster Industrial Park

50 Mandalay Drive, Winnipeg, Manitoba



**M2
ZONING**



**GREAT
ACCESS**



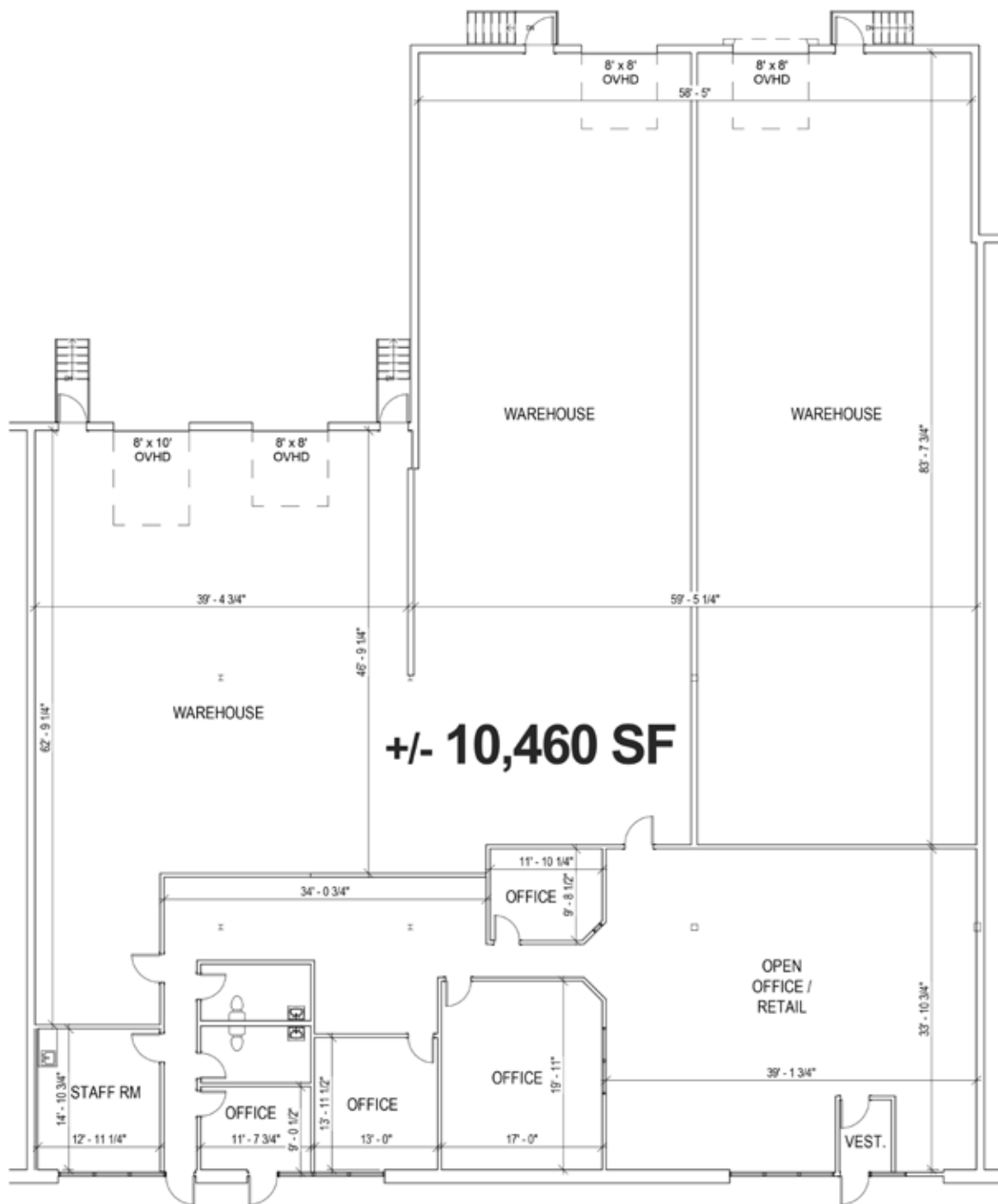
**6 TRANSIT
ROUTES NEARBY**

www.shindico.com

Shindico

50 Mandalay Drive, Winnipeg, Manitoba

FLOOR PLAN



FOR LEASE

50 Mandalay Drive, Winnipeg, Manitoba

PROPERTY SUMMARY

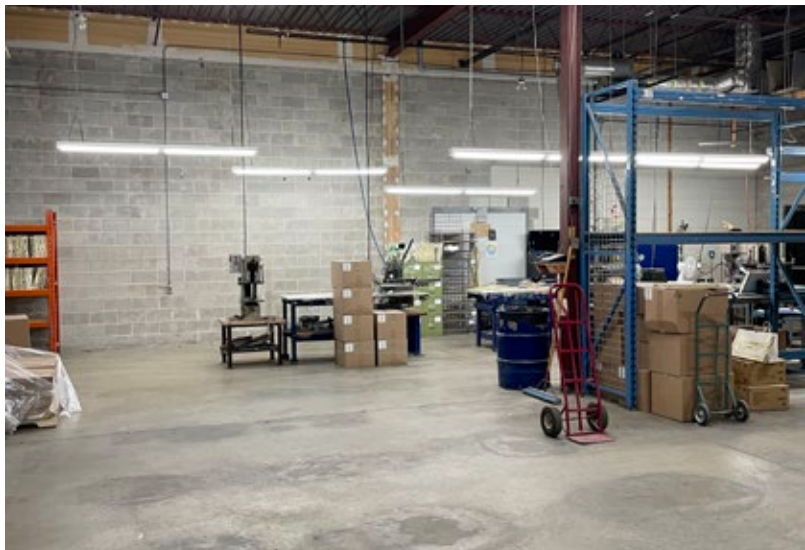
Available	+/- 10,460 SF
Possession Date	Immediately
Net Rent	\$9.95/SF
CAM* & Tax (2025 est.)	\$4.88/SF
Zoning	M2

FEATURES

- Features large open area, staffroom/ kitchenette, four offices and two washrooms.
- Includes four dock-level loading door.
- Ceiling Height +/- 15 foot clear.
- Landlord may consider subdividing the unit.

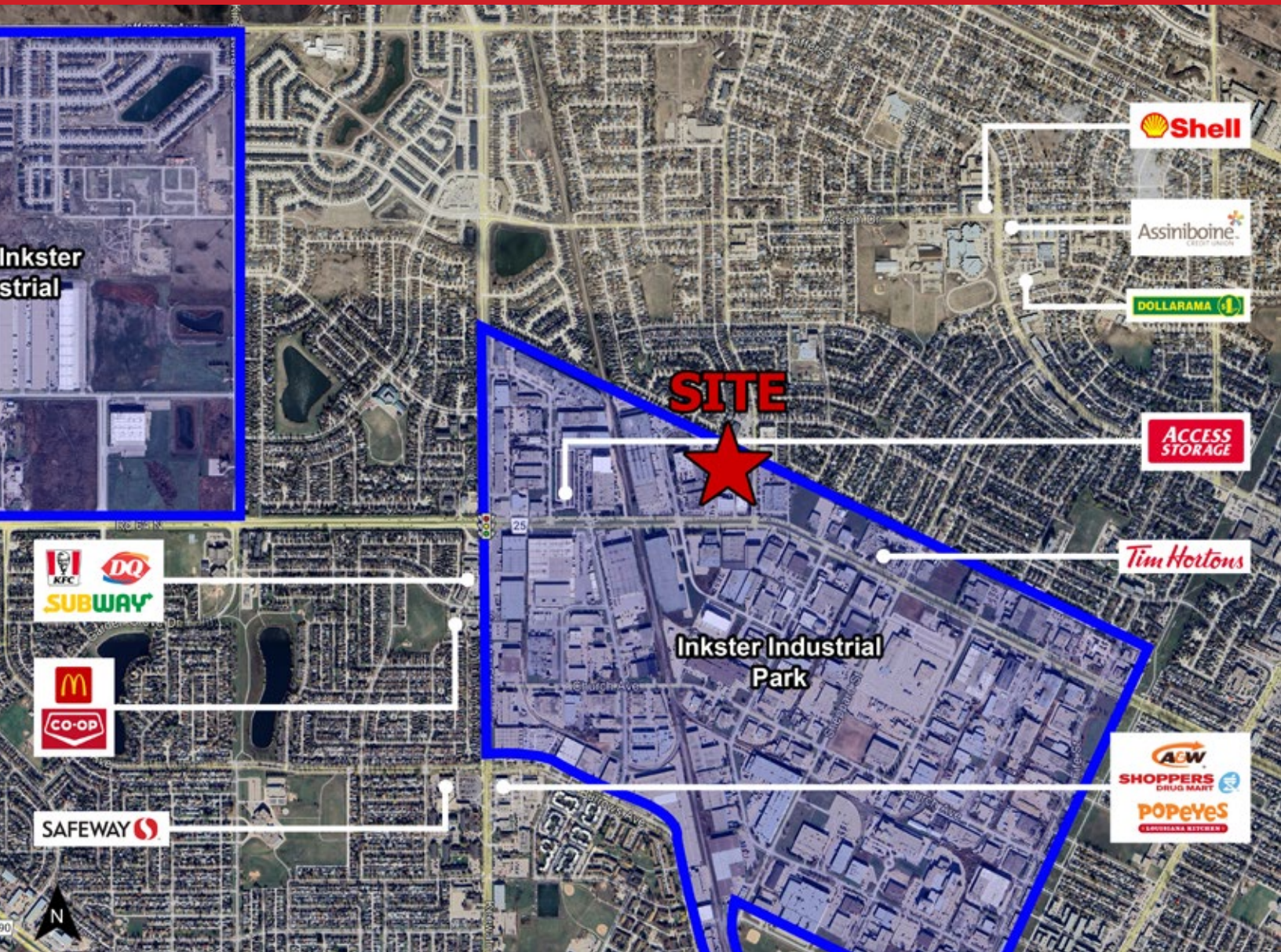
LOCATION

- Situated in Northwest Winnipeg at the intersection of Mandalay Drive and Wyatt Road.
- In the heart of Inkster Industrial Park, near North Inkster Park.
- Conveniently located near major transportation routes.
- Close to numerous amenities, such as restaurants, shops, and services.



FOR LEASE

50 Mandalay Drive, Winnipeg, Manitoba



FOR MORE INFORMATION, PLEASE CONTACT:

Murray Goodman

Senior Vice President, Industrial & Investment
P (204) 928-8228
C (204) 990-4800

mgoodman@shindico.com

Mark Scaletta

Vice President, Industrial
P (204) 928-8223
C (204) 510-3754

mscaletta@shindico.com

Robert Scaletta

Senior Vice President, Industrial
P (204) 928-8242
C (204) 223-9777

rscaletta@shindico.com

Shindico Realty Inc.

200-1355 Taylor Avenue
Winnipeg, Manitoba R3M 3Y9
P (204) 474-2000
inquire@shindico.com
www.shindico.com



Shindico

Succeeding by Helping Others Succeed



Shindico is dedicated to the protection of the environment and the communities that we are a part of.

The accuracy of the information set out herein has not been confirmed, and Shindico Realty Inc. and its affiliates make no representations or warranties as to the accuracy of the information and assumes no responsibility for errors or omissions. The recipient is responsible to verify the accuracy of any information and bears all risk related to any inaccuracies. 062425