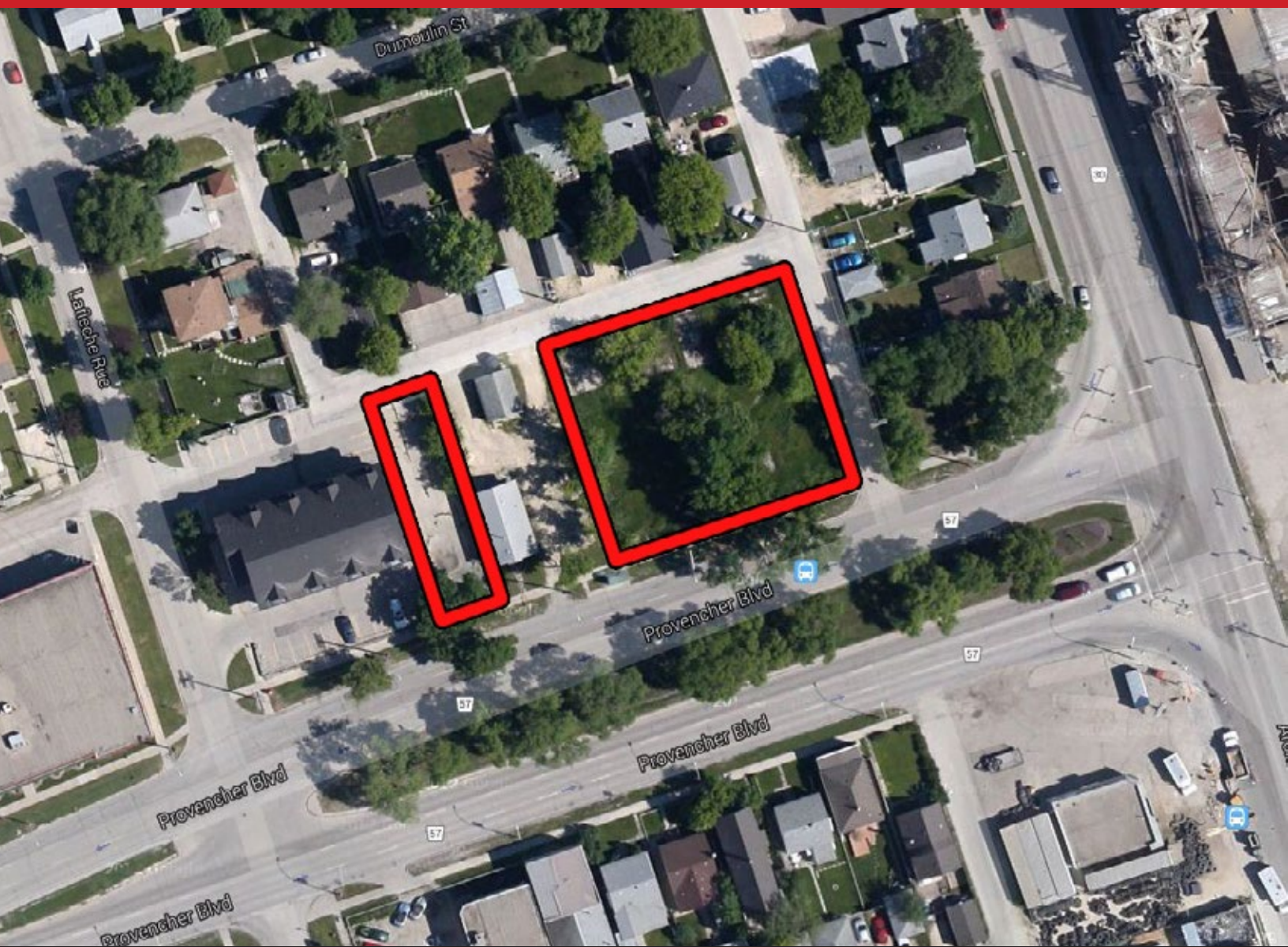


FOR LEASE

Land for Lease - Build-To-Suit

493 Provencher Boulevard, Winnipeg, Manitoba



**DOMINANT
SIGNAGE**



**GREAT
ACCESS**



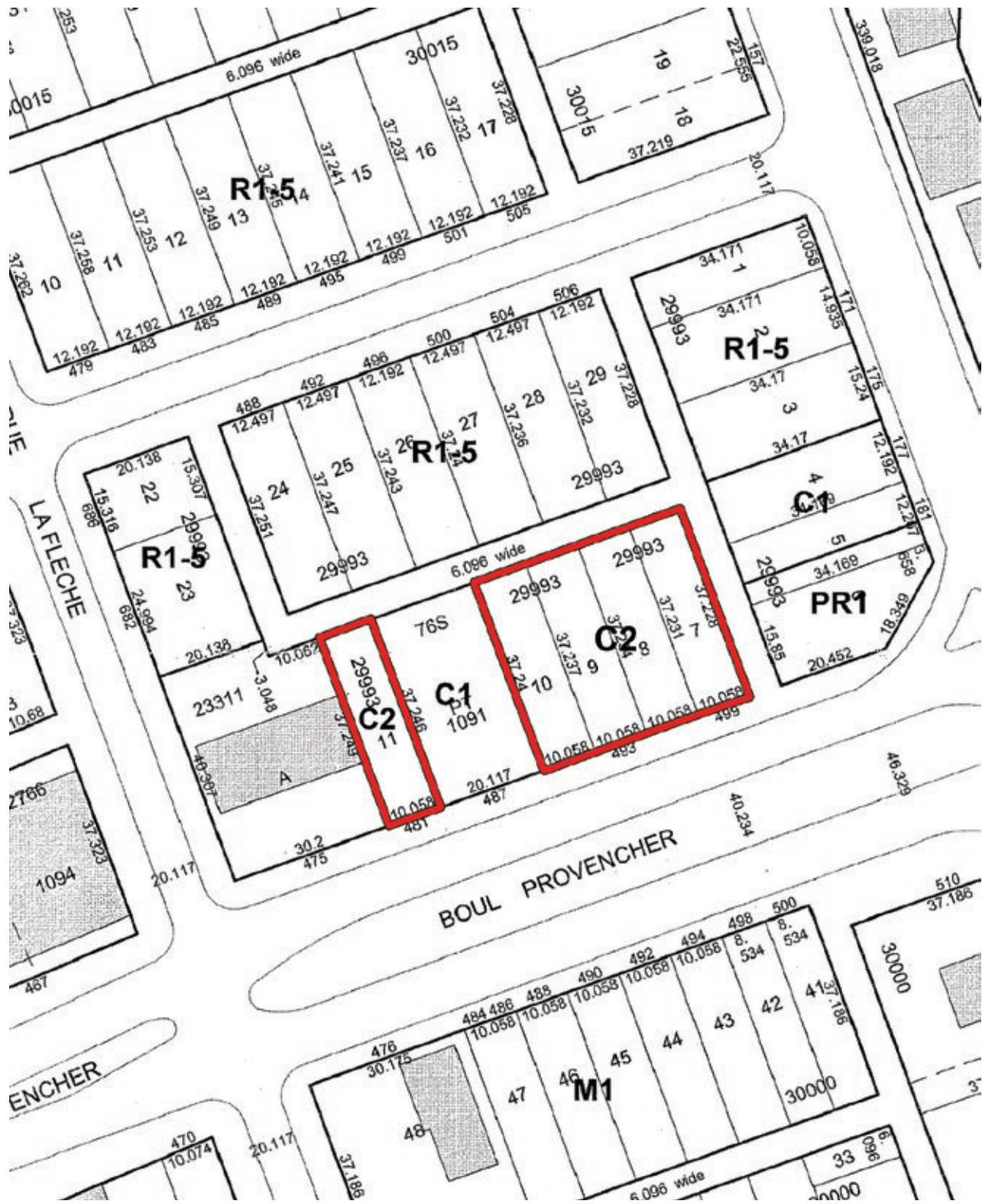
**STRONG
TRADE AREA**

www.shindico.com

Shindico

FOR LEASE

493 Provencher Boulevard, Winnipeg, Manitoba



204.474.2000

Shindico

FOR LEASE

493 Provencher Boulevard, Winnipeg, Manitoba



PROPERTY SUMMARY

Available

Lots 7-10	16,124 +/- SF
Lot 11	4,032 +/- SF
Zoning	C2 - Commercial

LOCATION

- Situated on Provencher Boulevard off of Archibald Street.
- Provencher Boulevard is the retail and commercial heart of the St. Boniface district.
- Located on a major access route from east Winnipeg to Downtown.
- Adjacent to St. Boniface Industrial Park.

DEMOGRAPHICS

	3 km. Radius	5 km. Radius
Total Population	73,998	242,894
Daytime Population	145,550	320,330
Households	34,867	107,445
Median Age	36.7	37.1
Avg. Household Income	\$79,741	\$85,094

EnviroNics Analytics ©2023

TRAFFIC

29,700 vehicles per day on Provencher Boulevard at Archibald Street.

City of Winnipeg Public Works Department 2022

FOR LEASE

493 Provencher Boulevard, Winnipeg, Manitoba



FOR MORE INFORMATION, PLEASE CONTACT:

Michael Stronger

*SHINDICO REALTY, MICHAEL STRONGER and SHINDICO REALTY are affiliated Brokers

P (204) 928-8237

C (204) 793-3448

mstronger@shindico.com

Shindico Realty Inc.

200-1355 Taylor Avenue

Winnipeg, Manitoba R3M 3Y9

P (204) 474-2000

inquire@shindico.com

www.shindico.com

Shindico

Succeeding by Helping Others Succeed



Shindico is dedicated to the protection of the environment and the communities that we are a part of.

The accuracy of the information set out herein has not been confirmed, and Shindico Realty Inc. and its affiliates make no representations or warranties as to the accuracy of the information and assumes no responsibility for errors or omissions. The recipient is responsible to verify the accuracy of any information and bears all risk related to any inaccuracies.082624