

FOR LEASE

Warehouse/Office Located in the Inkster Industrial Park

1700 Church Avenue, Winnipeg, Manitoba



**CLOSE TO
TRANSPORTATION
ROUTES**



**M2
ZONING**



**GRADE & DOCK
LOADING**



**HEAVY
POWER**



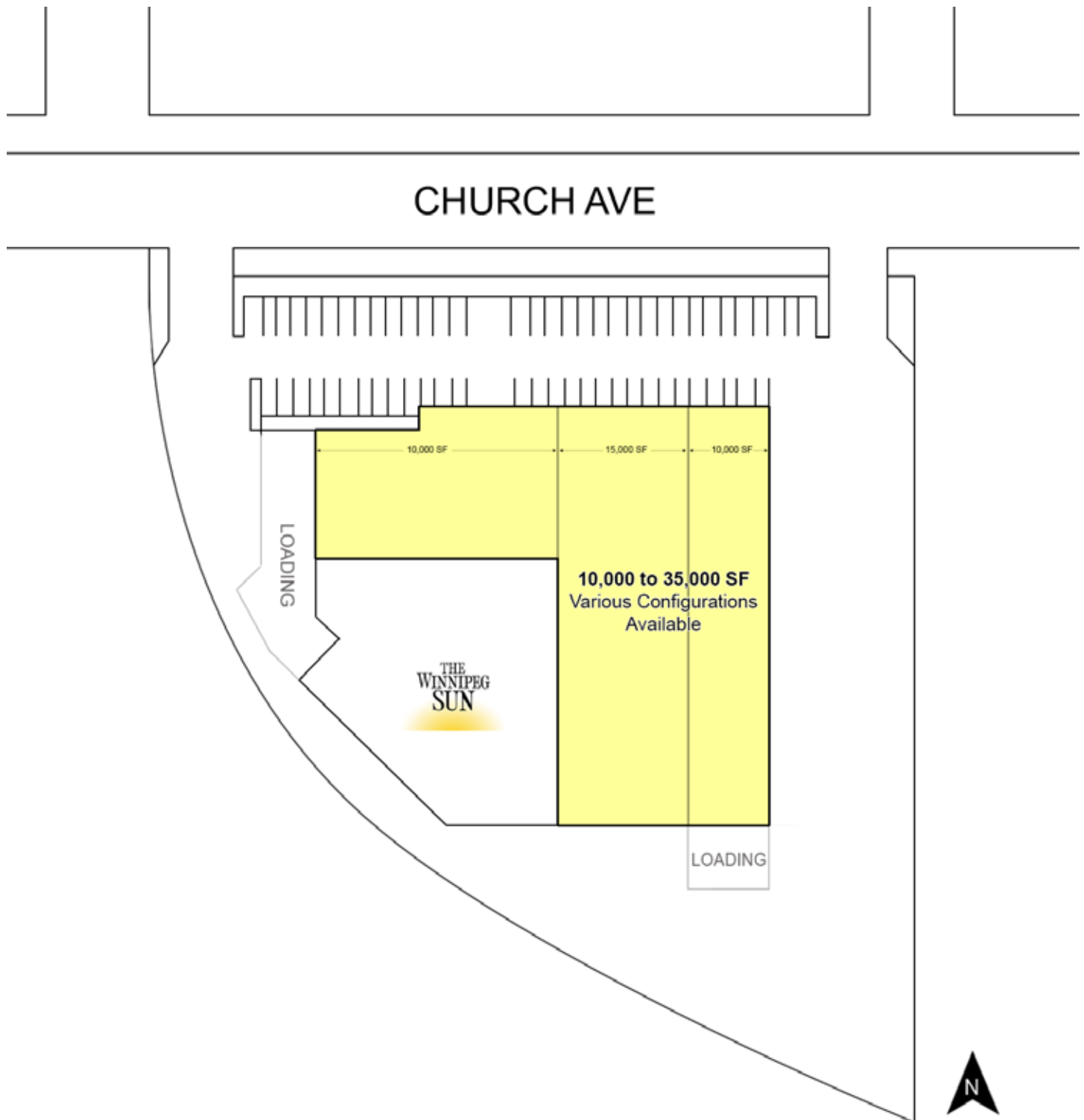
**ON SITE
PARKING**

www.shindico.com

Shindico

FOR LEASE

1700 Church Avenue, Winnipeg, Manitoba



204.474.2000

Shindico

FOR LEASE

1700 Church Avenue, Winnipeg, Manitoba

PROPERTY SUMMARY

Available	10,000 to 35,000 SF
Land Area	2.7 acres
Lease Rate	Contact Agent
Additional Rent* (est.)	\$3.90/SF
Zoning	M2 - Manufacturing General
Year Built	1975
Ceiling Height	20' 8" to underside of joists
Loading	Grade & Dock Level Doors

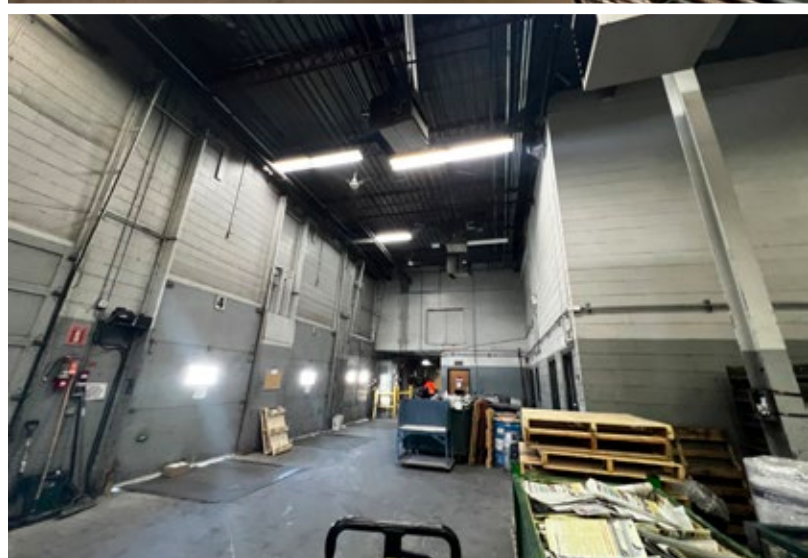
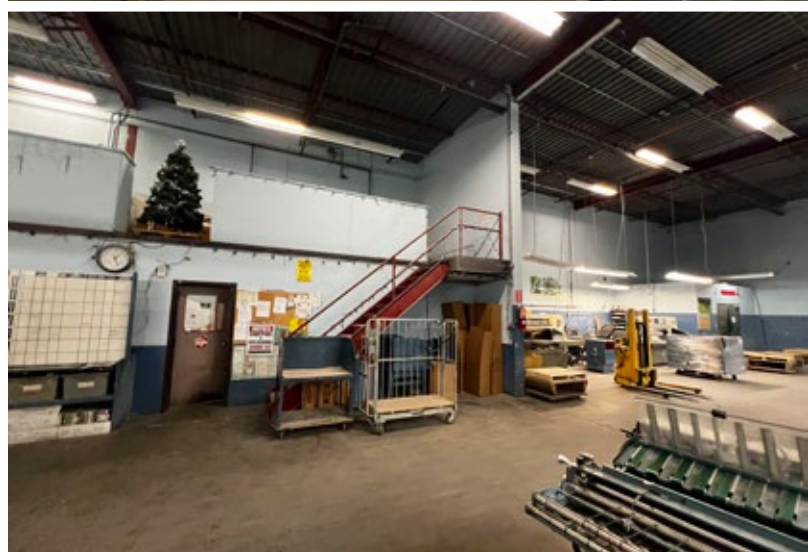
*5% management fee on gross rent

FEATURES

- Various configurations available.
- Ample on-site parking.
- **Heavy Power: 1200A 347/600V 3 Phase.**
- Excellent frontage on Church Avenue.
- Suitable for manufacturing, warehouse, small contractors uses.
- Professionally managed building.
- Close to shopping, restaurant and service amenities.

LOCATION

- Located in the Inkster Industrial Park, at the intersection of Church Avenue & Hutchings Street.
- Close proximity to major transportation routes.
- Located within a 10 minute drive to James Armstrong Richardson International Airport and CentrePort Canada.
- Multiple transit stops in close proximity.

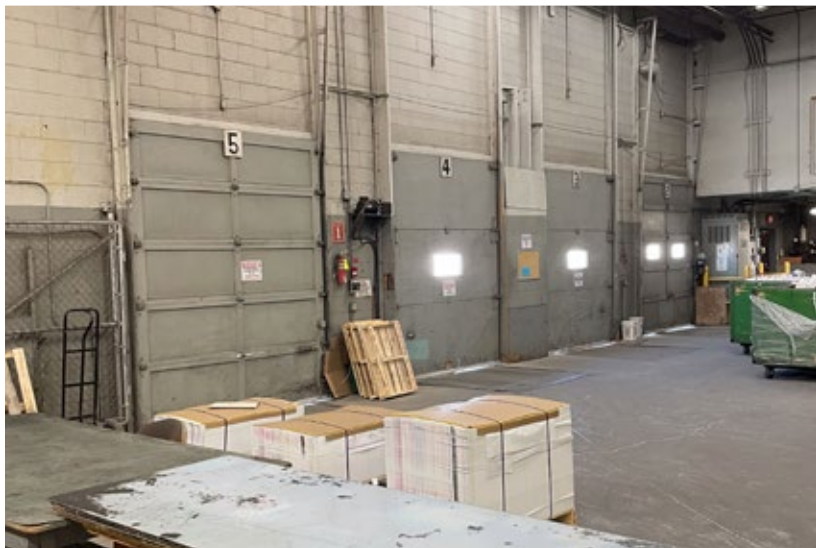
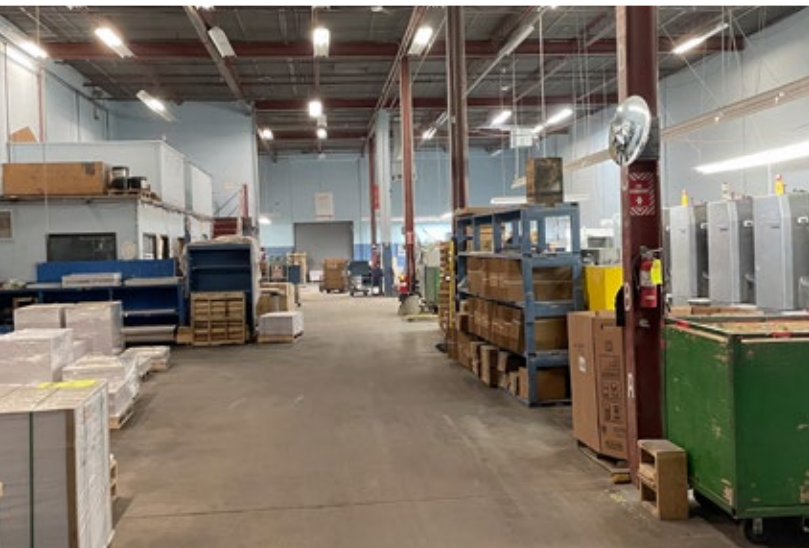


204.474.2000

Shindico

FOR LEASE

1700 Church Avenue, Winnipeg, Manitoba



204.474.2000

Shindico

FOR LEASE

1700 Church Avenue, Winnipeg, Manitoba

DRIVE TIMES FROM 1700 CHURCH AVENUE



Route from Subject Lands	Distance (km.)	Drive Time
1 North Perimeter Highway (Hwy 100) & Rte 90	8.1	9 min
2 East Perimeter Highway (Hwy 100) & Trans-Canada Highway East (Hwy 1)	32	30 min
3 South Perimeter Highway (Hwy 100) & Hwy 75	24	34 min
4 West Perimeter Highway (Hwy 100) & Trans-Canada Highway West (Hwy 1)	16.2	16 min
5 Winnipeg Richardson International Airport	7.2	13 min
6 Downtown (Portage Ave & Main St)	7.8	15 min
7 Lagimodiere Boulevard (Hwy 59) & Regent Avenue West	11.5	20 min
U.S. Border Crossing via Hwy 75	119	1 hr 33 min
U.S. Border Crossing via Hwy 59	132	1 hr 43 min
Brandon, Manitoba	216	2 hr 20 min

FOR LEASE

1700 Church Avenue, Winnipeg, Manitoba



FOR MORE INFORMATION, PLEASE CONTACT:

Mark Scaletta

Vice President, Industrial

P (204) 928-8223

C (204) 510-3754

mscaletta@shindico.com

Robert Scaletta

Senior Vice President, Industrial

P (204) 928-8242

C (204) 223-9777

rscaletta@shindico.com

Murray Goodman

Senior Vice President, Industrial & Investment

P (204) 928-8228

C (204) 990-4800

mgoodman@shindico.com

Shindico Realty Inc.

200-1355 Taylor Avenue

Winnipeg, Manitoba R3M 3Y9

P (204) 474-2000

inquire@shindico.com

www.shindico.com

Shindico

Succeeding by Helping Others Succeed



Shindico is dedicated to the protection of the environment and the communities that we are a part of.

The accuracy of the information set out herein has not been confirmed, and Shindico Realty Inc. and its affiliates make no representations or warranties as to the accuracy of the information and assumes no responsibility for errors or omissions. The recipient is responsible to verify the accuracy of any information and bears all risk related to any inaccuracies. 061625

CORFAC
INTERNATIONAL