

# Grant Park Pavilions

**New Retail Building in front of Walmart Supercentre**

1110 Taylor Avenue, Winnipeg, Manitoba

**NOW PRE-LEASING!**



**VERY  
WALKABLE**



**TRANSIT  
ORIENTED**



**WALMART & SOBEYS  
ANCHORED**



**AMPLE  
PARKING**



**GREAT  
ACCESS**

[www.shindico.com](http://www.shindico.com)

**Shindico**

# Grant Park Pavilions

1090 Taylor Avenue, Winnipeg, Manitoba

## SITE PLAN

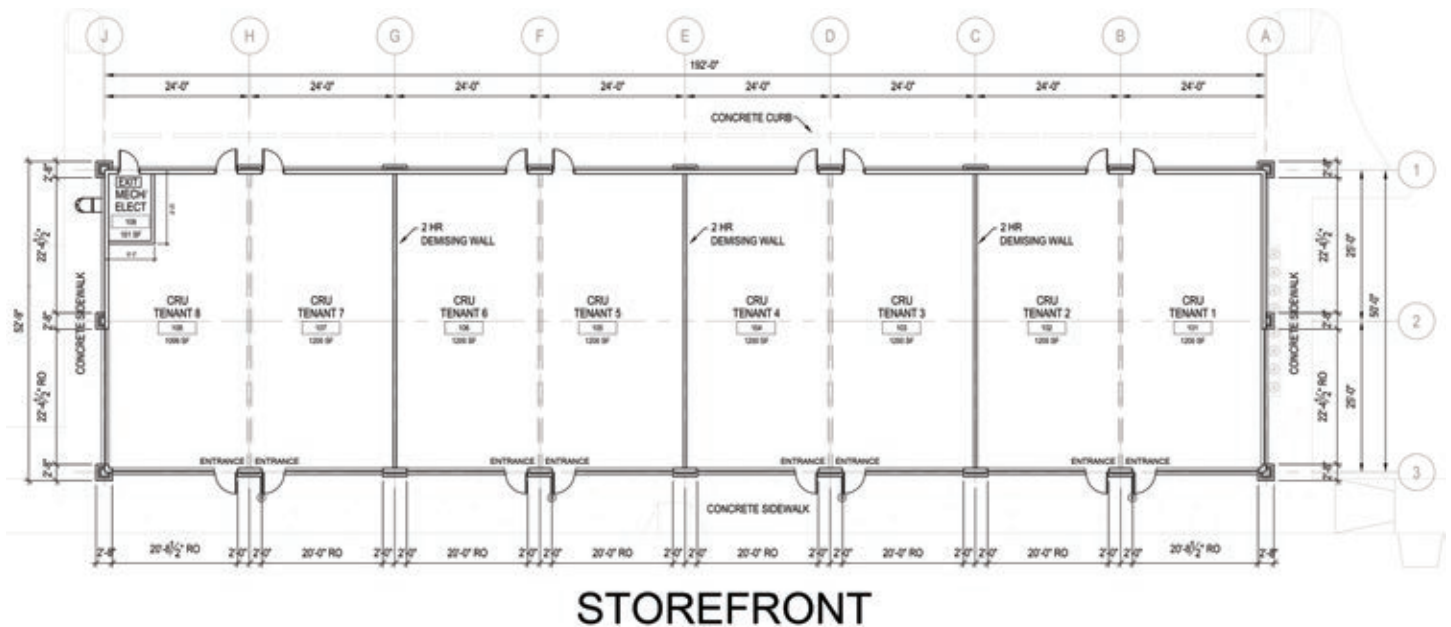


204.474.2000

**Shindico**



## FLOOR PLAN





## PROPERTY SUMMARY

Available	1,200 to 9,600 SF
Possession (est.)	Q3 2026
Property Taxes (2025 est.)	\$11.03/SF
CAM* (2025 est.)	\$4.95/SF
Zoning	C3

\*plus management fee

## FEATURES

- Join Firehouse Subs, Supplement World and Scotiabank!
- Walmart anchored development.
- Cross access with Grant Park Festival, anchored by Sobeys.
- Easy Access from Taylor Avenue.
- Built-in customer base from nearby Taylor Residences.
- Ample parking with wide stalls.

## LOCATION

- Grant Park Pavilions' central location within the City means more customers and great opportunities!
- Extensive road network connecting to major arteries that connect to all areas of the city.
- Nearby the established communities of River Heights, Linden Woods, Fort Garry, Fort Rouge, and Tuxedo.

## PUBLIC TRANSPORTATION

- The **Blue Line** (Southwest Rapid Transitway) runs adjacent to the development and connects Downtown with the University of Manitoba.
- **8 regular transit routes** and several **active transportation paths** in close proximity.



# Grant Park Pavilions

1090 Taylor Avenue, Winnipeg, Manitoba



## EVERYTHING YOU NEED, IN ONE CONVENIENT DESTINATION!

Grant Park Pavilions is a **2,000,000+ square foot mixed-use infill development** centrally located at an unbeatable location in the heart of Southwest Winnipeg. **Anchored by Walmart Supercentre**, this transit-oriented development provides a variety of options to live, shop and work, all in close proximity. Featuring retail, shops, dining and office with a focus on connectivity to the surrounding vibrant communities.

**ON-SITE CUSTOMERS! New multi-family residential at the property with luxury suites next door at the Taylor Residences.** A total of 800+ new multi-family suites are proposed.

- **Next door is Grant Park Festival, anchored by Sobeys** and featuring great tenants, including: Boston Pizza, Starbucks, Original Pancake House, SkinWise Dermatology, Pet Valu, Holt Dental, and more.
- North is Grant Park Shopping Centre, featuring Canadian Tire, Co-op Food Store, Landmark Cinemas, Liquor Mart, Winners, Shoppers Drug Mart and Goodlife Fitness.
- Several recreational and health facilities are nearby including the Bill & Helen Norrie Library, Pan Am Pool Complex, Pan Am Clinic, Winnipeg Soccer Complex, Taylor Tennis Club and Reh-Fit Centre.



1090 Taylor Avenue, Winnipeg, Manitoba



FOR MORE INFORMATION, PLEASE CONTACT:

**Michael Stronger\***

\*SHINDICO REALTY, MICHAEL STRONGER and SHINDICO REALTY are affiliated Brokers

P (204) 928-8237

C (204) 793-3448

mstronger@shindico.com

**Dino Alevizos\***

\*Services provided by Dino Alevizos Personal Real Estate Corporation

P (204) 928-8209

C (204) 781-9717

dalevizos@shindico.com

**Shindico Realty Inc.**

200-1355 Taylor Avenue

Winnipeg, Manitoba R3M 3Y9

P (204) 474-2000

[inquire@shindico.com](mailto:inquire@shindico.com)

[www.shindico.com](http://www.shindico.com)



**RETAIL** BROKERS  
NETWORK

# Shindico

## Succeeding by Helping Others Succeed



*Shindico is dedicated to the protection of the environment and the communities that we are a part of.*